

ARSB Antibody (C-term)
Purified Rabbit Polyclonal Antibody (Pab)
Catalog # AP7460b**Specification**

ARSB Antibody (C-term) - Product Information

Application	IHC-P, WB,E
Primary Accession	P15848
Reactivity	Human
Host	Rabbit
Clonality	Polyclonal
Isotype	Rabbit IgG
Calculated MW	59687
Antigen Region	464-493

ARSB Antibody (C-term) - Additional Information**Gene ID** 411**Other Names**

Arylsulfatase B, ASB, N-acetylgalactosamine-4-sulfatase, G4S, ARSB

Target/Specificity

This ARSB antibody is generated from rabbits immunized with a KLH conjugated synthetic peptide between 464-493 amino acids from the C-terminal region of human ARSB.

Dilution

IHC-P~~1:10~50

WB~~1:1000

E~~Use at an assay dependent concentration.

Format

Purified polyclonal antibody supplied in PBS with 0.09% (W/V) sodium azide. This antibody is prepared by Saturated Ammonium Sulfate (SAS) precipitation followed by dialysis against PBS.

Storage

Maintain refrigerated at 2-8°C for up to 2 weeks. For long term storage store at -20°C in small aliquots to prevent freeze-thaw cycles.

Precautions

ARSB Antibody (C-term) is for research use only and not for use in diagnostic or therapeutic procedures.

ARSB Antibody (C-term) - Protein Information**Name** ARSB**Function** Removes sulfate groups from chondroitin-4-sulfate (C4S) and regulates its degradation

(PubMed:[19306108](#)). Involved in the regulation of cell adhesion, cell migration and invasion in colonic epithelium (PubMed:[19306108](#)). In the central nervous system, is a regulator of neurite outgrowth and neuronal plasticity, acting through the control of sulfate glycosaminoglycans and neurocan levels (By similarity).

Cellular Location

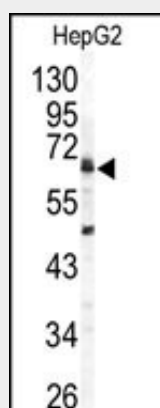
Lysosome {ECO:0000250|UniProtKB:P50429}. Cell surface {ECO:0000250|UniProtKB:P50429}

ARSB Antibody (C-term) - Protocols

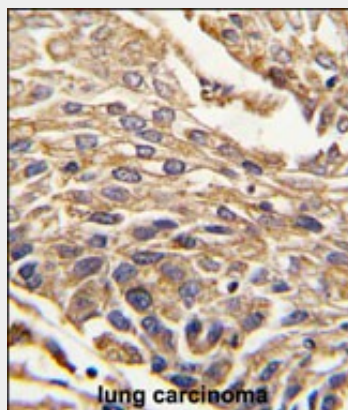
Provided below are standard protocols that you may find useful for product applications.

- [Western Blot](#)
- [Blocking Peptides](#)
- [Dot Blot](#)
- [Immunohistochemistry](#)
- [Immunofluorescence](#)
- [Immunoprecipitation](#)
- [Flow Cytometry](#)
- [Cell Culture](#)

ARSB Antibody (C-term) - Images



Western blot analysis of ARSB antibody (C-term) (Cat.#AP7460b) in HepG2 cell line lysates (35ug/lane). ARSB (arrow) was detected using the purified Pab .



Formalin-fixed and paraffin-embedded human lung carcinoma tissue reacted with ARSB antibody (C-term) (Cat. #AP7460b), which was peroxidase-conjugated to the secondary antibody, followed

by DAB staining. This data demonstrates the use of this antibody for immunohistochemistry; clinical relevance has not been evaluated.

ARSB Antibody (C-term) - Background

ARSB belongs to the sulfatase family. The arylsulfatase B homodimer hydrolyzes sulfate groups of N-Acetyl-D-galactosamine, chondroitin sulfate, and dermatan sulfate. The protein is targetted to the lysosome. Mucopolysaccharidosis type VI is an autosomal recessive lysosomal storage disorder resulting from a deficiency of arylsulfatase B.

ARSB Antibody (C-term) - References

Peters C., Schmidt B.J. Biol. Chem. 265:3374-3381(1990)
Modaressi S., Rupp K. Biol. Chem. Hoppe-Seyler 374:327-335(1993)
Kobayashi T., Honke K. Biochim. Biophys. Acta 1159:243-247(1992)